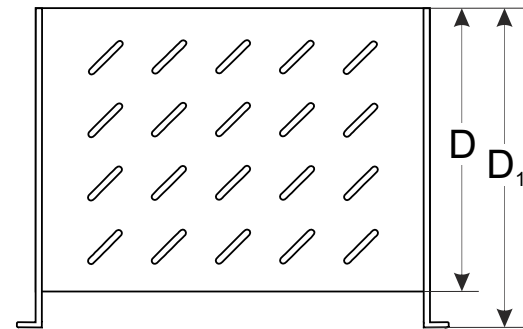
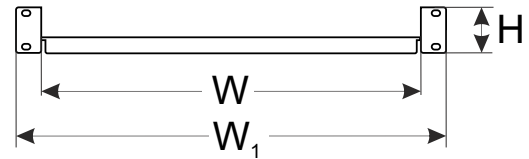
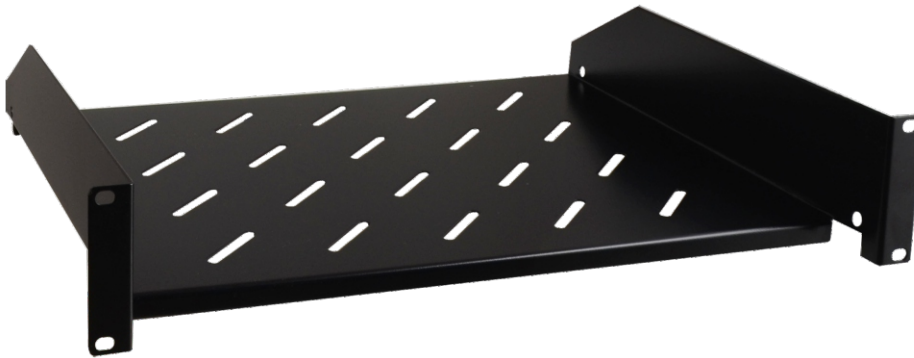


CODE: **RAPD600** v1.1/III  
 NAME: **Cantilever shelf 2U 445x315 for RACK cabinet, universal**

EN



## INTENDED USE

The cantilever shelf is intended for a 450÷1000mm deep RACK cabinet. Due to the shelf, the RACK cabinet can accommodate devices that are not housed in a RACK 19" enclosure.

## SPECIFICATIONS

<b>Mounting dimensions:</b>	$W_1=19"$ , $H=2U$ , $D_1=350$
<b>External dimensions:</b>	$W_1=483$ , $H=87$ , $D_1=350$ [mm, +/-2]
<b>Dimensions of the shelf:</b>	$W=445$ , $D=315$ [mm, +/-2]
<b>Net/gross weight:</b>	1,8 / 2,05 [kg]
<b>Materials:</b>	1,2 mm cold-rolled steel (SPCC), RAL 9004
<b>Static load:</b>	20 kg
<b>Use:</b>	inside
<b>Notes:</b>	- four-point fixing to the front RACK rails - 4 M6 screws + cage nuts included