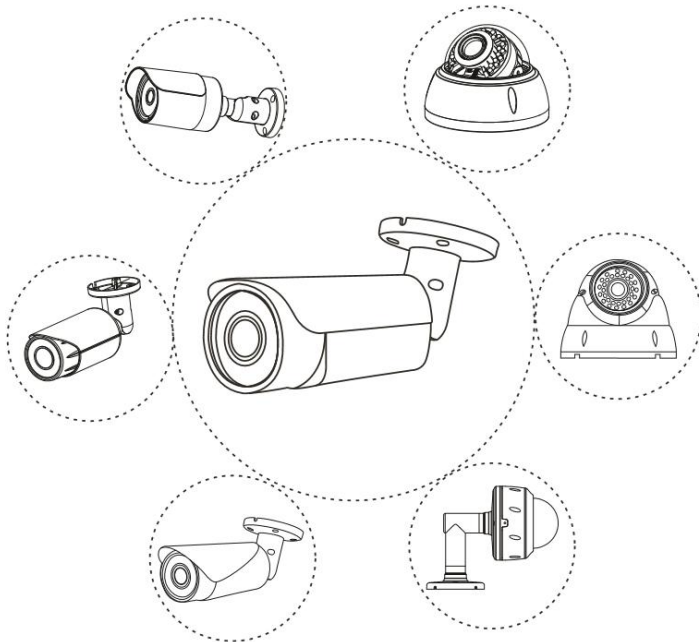


# HD IP CAMERA USER GUIDE



## Feature Lists

- ✓ 24 x 7 online live HD video preview
- ✓ Remote access via multiple web browsers(IE/Firefox, etc.)
- ✓ Easy P2P monitoring via smart phone APP(Android/IOS)
- ✓ ONVIF compatible, Easy access to third-party NVR and video surveillance system
- ✓ Optional POE , Alarm I/O, Audio, lens, Power supply , Storage

*Note: This manual may contain some incorrect information, even though it was published with our carefully proofreading. The new updates will be added to the next release without notice. Your valuable advice is really appreciated.*

## Working with NVR

The IP camera supports standard ONVIF protocol and it can be added to third-party video recorder. Some of the models support both H264 and H265 encode mode. The H265 encode cameras can compress the video data to a very low bit rates which allows more video data storage than normal H.264 camera. *Only NVR supports H265 that you can configure the camera working at H265 mode.*

Before pairing cameras to the NVR, make sure the NVR and cameras have valid and matching IP scheme, then search and add the IP cameras to the NVR.

The screenshot shows the 'NET Channel Management' window. At the top, a message states 'The equipment has been added.' Below this is a table with columns: Chn, IP/DoMain, Protocol, Status, Delete, Edit, and Front Set. Below the table are buttons for 'BatchDelete', 'HandAdd', and 'Status'. A callout box points to the 'NET Set' column of the first row, with the text 'Click to modify the camera IP address'. Below the table is a section for 'Network equipment online.' with a table of columns: ID, IP/DoMain, Protocol, Port, WebPor, Device Type, Add, and NET Set. The first row is highlighted with a red box. Below this table are buttons for 'Filter', 'Search', 'PING', and 'BatchAdd'. A note at the bottom says '\*Right there on the channel shortcut configuration\*' and a 'Close' button is at the bottom right.

ID	IP/DoMain	Protocol	Port	WebPor	Device Type	Add	NET Set
01	192.168.1.33	Aebell	8091	80	NVS-DM36X-HD	+	
02	192.168.2.123	Aebell	8091	80	NVS-DM36X-HD	+	
03	192.168.2.124	Aebell	8091	80	NVS-DM36X-HD	+	
04	192.168.2.125	Aebell	8091	80	NVS-DM36X-HD	+	

**Note:** if you get a no video issue on some of the NVR suppliers, please select ONVIF protocol and modify the NVR's default ONVIF password after adding it in. (camera default password: 123456).

The screenshot shows the 'Channel Set' configuration window. It has the following fields and values:

- Channels: 3 - NET
- Protocol Type: ONVIF
- IP/DoMain: 192.168.0.42
- Port: 80
- TransportProtocol: TCP
- UserName: admin
- Password: ●●●●●●
- Remote Detect: Detect, Ping
- Remote Channel: 1

Buttons at the bottom: Copy, OK, Cancel, App.

Other problems please contact the both NVR and IP camera suppliers for technical assistance.

## Frequently Asked Questions

1. Why can't I open the default IP address 192.168.0.123 via web browser?

Install the IP search tool from the CD and do a search to check the actual IP address. Make sure the IP address matches the LAN IP scheme, such as, manually set computer 192.168.0.100 and IP camera 192.168.0.123, or computer 192.168.1.100 and IP camera 192.168.1.123

2. How to reset the password?

The default Username: admin, Password: 123456. If you changed the password and don't remember, please install the search tool to find the camera IP and click **Reset factory** button.

3. How to upgrade the IP cameras ?

1) Ask the supplier for the suitable firmware, 2) you can use the web browser, search tool, or PC client to upgrade the camera, 3) go to the **[Config] > [System maintenance] > [System update]**, click **browse** and select the firmware, then click **Upgrade** button and wait for the operation to complete.

4. How to fetch the RTSP video stream and http snapshot?

1) MainStream: rtsp://IP:554/h264?username=admin&password=123456  
2) SubStream: rtsp://IP:554/h264cif?username=admin&password=123456  
3) low resolution: http://IP/cgi-bin/snapshot.cgi?stream=1  
4) HD: http://IP/cgi-bin/snapshot.cgi?stream=0

5. Why the NVR doesn't show image after adding your IP camera ?

1) make sure you selected the right protocol (ONVIF , Aebell or YCX) , 2) make sure the network port IP scheme range and subnet mask of the NVR and IP camera are the same.(eg. NVR:192.168.1.x, and IP camera:192.168.1.y), 3) try changing the camera encode mode to H.264 if the NVR can't support H.265.  
**(Config -> Media -> Encode mode: H.264)**

6. How to make the NVR record in motion detection mode?

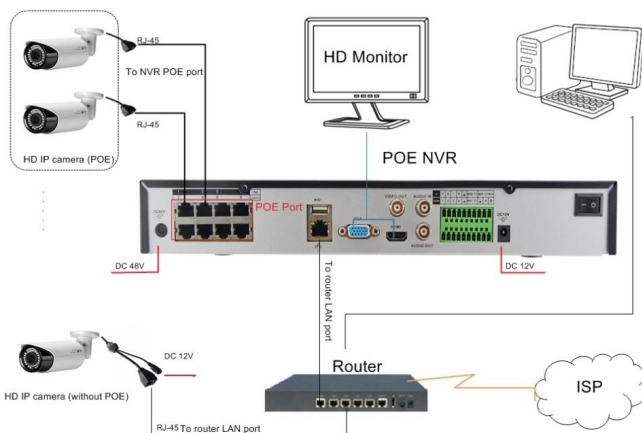
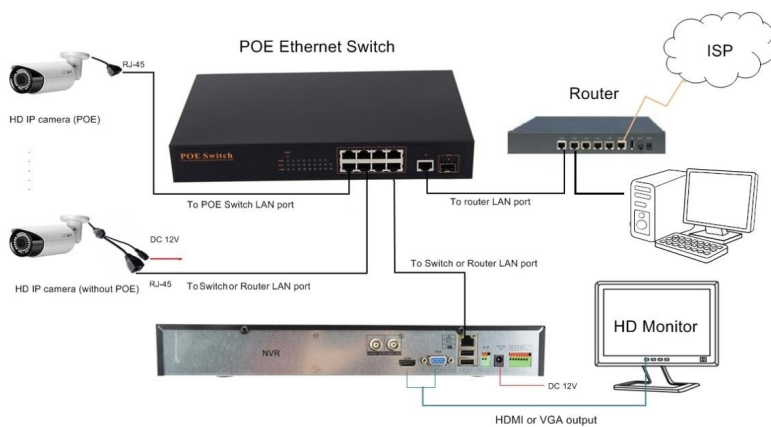
1) enable the IP camera motion detection function via web browser or UC client,  
2) add the IP camera via ONVIF protocol, 3) change the NVR record mode to Motion Detection mode, 4) check the NVR screen MD icon and try playback .

7. Where can i control the motorized auto focus lens zoom?

1) using web browser ;  
2) control by PC client "UC" ;  
3) roll the mouse wheel at the search tool preview window;  
4) find the PTZ menu in your NVR to control lens zoom.

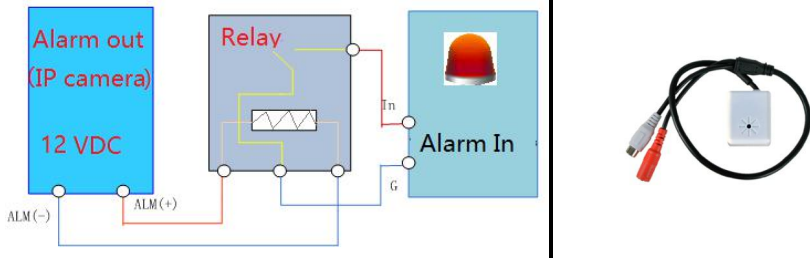
***For more product application details please checking the CD for reference.***

## System Topology (reference only)



### Note:

1. If you do not power the IP camera via PoE, you have to use a 12 VDC power supply to power the camera.
2. For full functions camera with I/O alarm and audio, please connect the relay and sound pick-up needed.



## Search and modify the camera default IP address

**Note: IP address: 192.168.0.123 , Username: admin, Password: 123456**

Each IP camera has the same default IP address. It is recommended to change the camera's IP address via computer before using. You can install the search tool or UC client from the CD to quickly configure the IP camera.

The search tool *AjDevTools\_install* shown as below:

IP address	Model	SN	Mac	P2P ID	Version number	State	Running t
192.168.1.40	NVS-IPCAM-MC200...	0600000014873FF	00:08:00:01:48:73	FE31177D477...	MC200C_AP_V_ER_L V2.3.1 build 2016-12-07...	11:18:21 Alarm.notion...	1 Day6 Me
192.168.1.51			00:08:00:00:38:32	5937F2E59F5	MC400L_AP_V_ER_L V2.3.1 build 2016-12-07...	11:18:33 Alarm.notion...	1 Day6 Me
192.168.1.202			00:08:00:01:9e:16	382E3480F44...	MC300Z_V_ER_L V2.3.1 build 2016-12-08 12:...	Login success	21 Hour42
192.168.1.201			00:08:00:01:54:a9	9E041236513...	MC200C_AP_V_ER_L V2.3.1 build 2016-12-08...	Login success	18 Hour43
192.168.1.131			00:02:00:04:b7:65	8577664272F...	MC130Z_V_ER_L V2.3.1 build 2016-12-08 15:...	11:18:18 Alarm.notion...	18 Hour44
192.168.1.120			00:08:00:00:00:26	373EFOA013...	MC400L_AP_V_ER_L V2.3.1 build 2016-12-08...	11:18:54 Alarm.notion...	19 Hour16
192.168.1.119			00:08:00:00:00:18	371838F4269...	MC400L_AP_V_ER_L V2.3.1 build 2016-12-08...	11:18:44 Alarm.notion...	19 Hour16
192.168.1.117			00:08:00:00:94:43	1086120810C...	MC400L_V_ER_L V2.2.0 build 2016-09-02 16:...	Login success	3 Day63 H

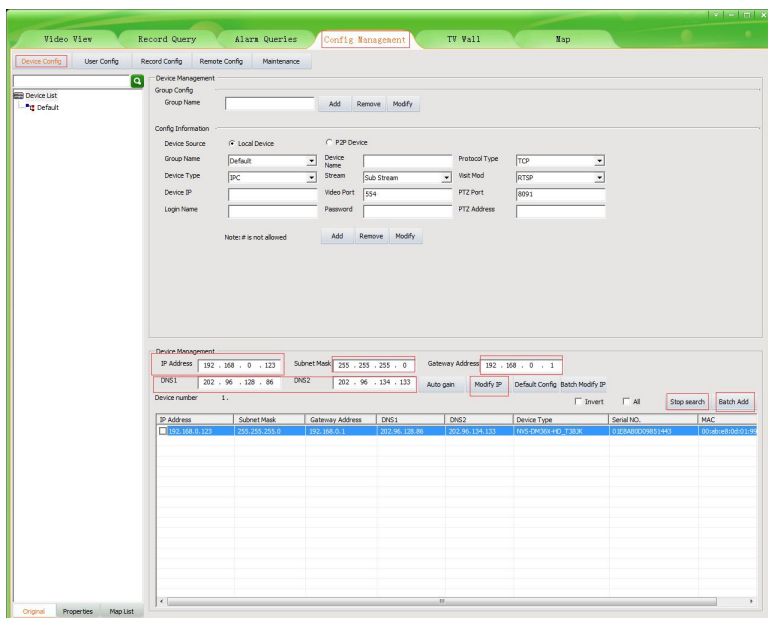
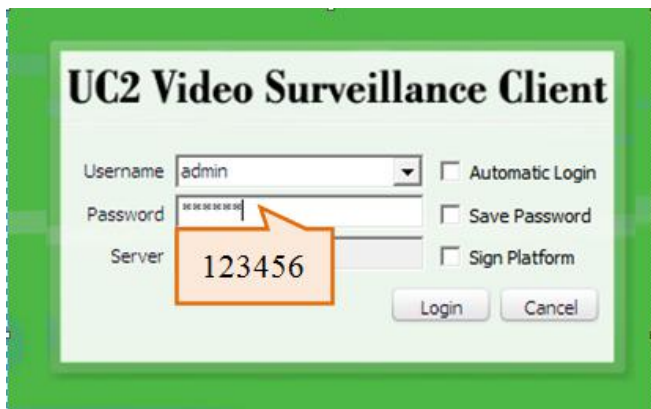
Click **Start Search** and all your cameras in the LAN will be listed. To modify IP address, there are two methods available 1) right click on the desired camera and choose "Modify IP address". 2) click the **ALL** check-box then click "IP Batch Setting".

### Tips:

Reset Password -> Restore default settings; Video full-screen -> double-click video;

Firmware upgrade -> Select the check-box, click **Browse** then click **File Upgrade**.

Also you can install and use the UC client from the CD.  
(Default user name: admin, Password: 123456)



Go to the **[Devices Config]** and click **[start search]**, all the camera in the LAN will be listed. You can modify the default IP address to match your LAN's IP scheme. Please be careful when setting up IP addresses to not have duplicated IP as other devices in LAN.

After changing all the IP cameras' IP address, you can search again and add them all to the UC client. Once the cameras are added, go to the tab **[Video View]** and drag the camera into the split windows to start previewing the cameras.

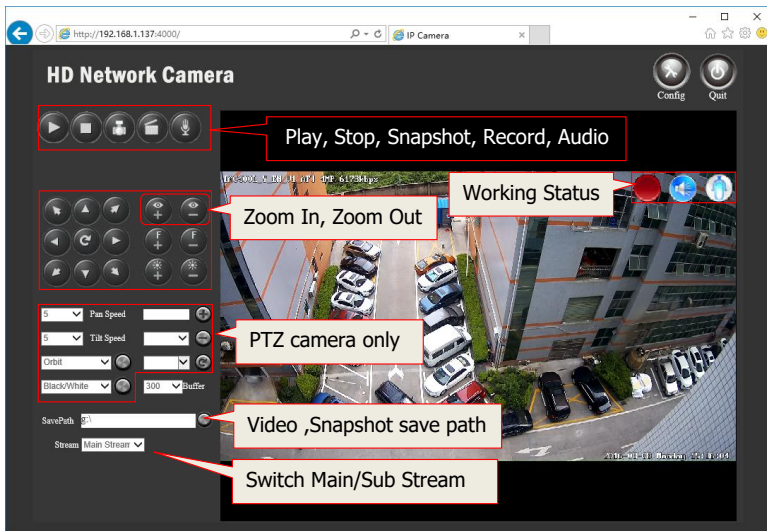
## Working with Internet Explorer

To access the camera's web interface, type in the IP camera's IP address in Internet Explorer's URL bar, click **install active-X plug-in** when prompted. You may have to download and run it as administrator. After installation, restart your web browser and access the IP again to gain access to the login page.

(Default user name: **admin**, Password: **123456**), Firefox and IE are supported.



Login with the user name and password. The live video would start automatically.



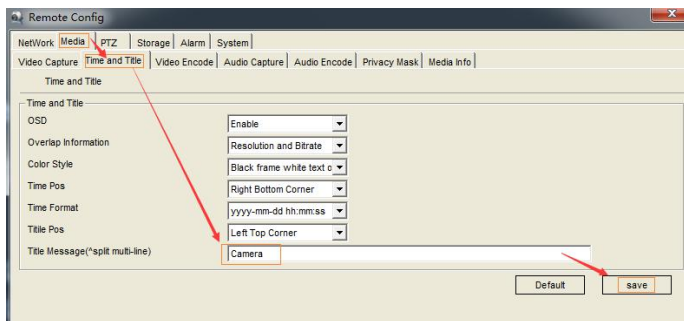
**Note:** Only the **Motorized Auto Focus** cameras can **Zoom In and Zoom Out**.

If you feel the video play very slow and delay when accessing remotely, please switch to Sub Stream instead.

## General Configurations

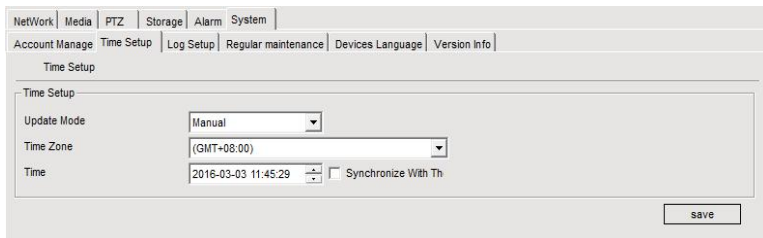
1) Modify the camera **name and time**

**[Config] > [Media] > [Time and Title]**. English and Chinese characters are supported.

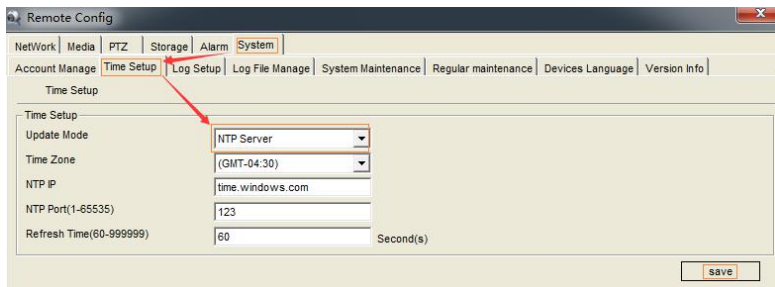


**[Config]>[System]>[Time setup]**. There are two time update modes available, **Manual** and **NTP**.

Select your **Time Zone**, and select **sync time with the computer**. Click **Save**.  
\*(time date will be reset to 2000-01-01 if camera restarts)



If the camera is connected to the Internet, you can set up an NTP server for the camera to sync time automatically.

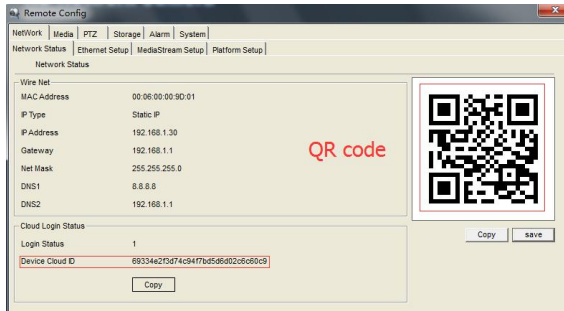


2) Remote Login via P2P ID



To find the device Cloud ID and QR code

[Config] > [Network] > [Network Status]

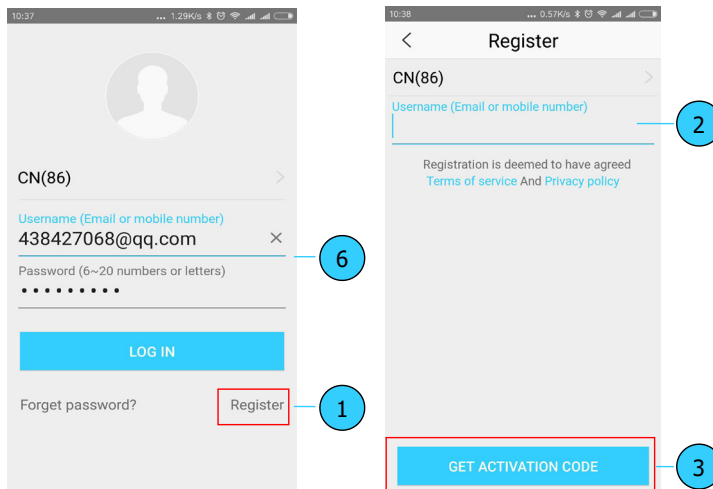


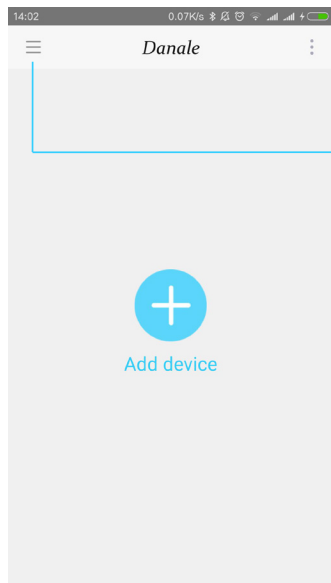
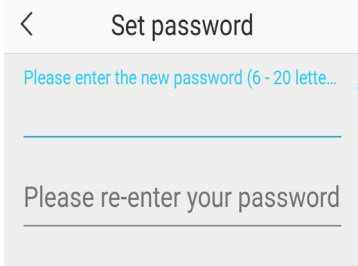
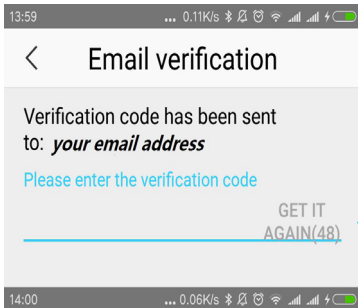
Using the P2P ID and QR code, you can access the camera remotely anywhere via smart phone with Internet access. Please register an account via mobile phone after installing the Danale APP from APP Store or Google Play Market, then log in and add your camera to start previewing.

Or you can go to the website <http://www.danale.com/> to register if you need PC remote access. You can download APP from the website to find out more.

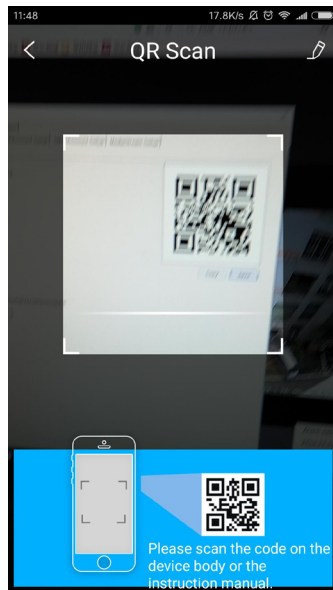
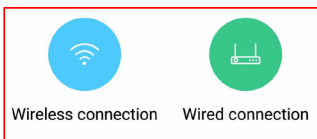
## Working with Smartphone

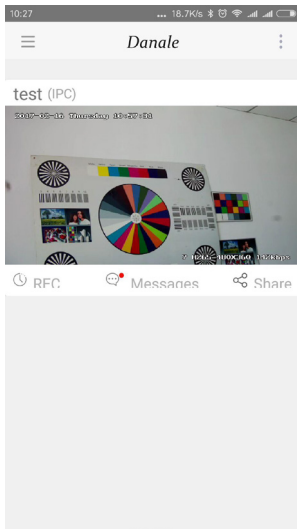
Search and download the APP **Danale** in Google Play market, Apple APP Store, or install it from the CD. Tap the icon to launch the app. For first time usage, press **Register** to register for an account.





Please ensure that the device is powered on







11



For smart phone remote login, please follow the below steps:

- 1) launch the APP **Danale** and Select your **country code** then register for an account *cellphone number or email address are permitted*
- 2) login and click **“+”** to **Add devices**
- 3) scan the camera **QR Code** to add the IP camera
- 4) click the camera list to start previewing

To share your camera with your friends or another user, click icon **“**  **”** and type in his Danale account.

To find manual, press icon **“**  **”**, then tap **help**

**Note:** if you cannot connect the camera, please check the IP address, gateway, and DNS setting on the camera. The Cloud login status value should be **“1”**, which means the camera has registered to the cloud server. You may also want to connect your phone to WiFi for better performance.